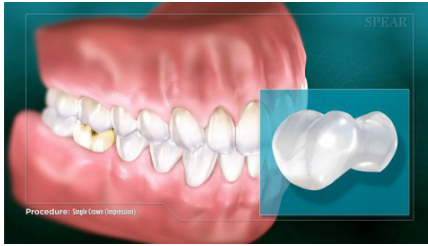
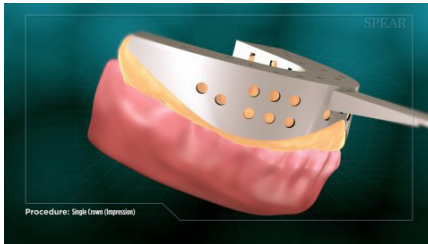


RESTORATIVE PROCEDURES
Single Crown
(Impression)



When a tooth's structure is compromised, a crown rebuilds it. A crown is usually made of ceramic or a composite material. Getting a crown generally requires multiple appointments to complete.



At the first appointment, your doctor will take an impression



Next, the tooth is prepared to make room for the crown.



Your dentist will take a second impression of the prepared tooth, and put in a temporary crown while your final restoration is being made by a dental laboratory.



When the crown is ready, your doctor will make final adjustments and cement it into place.



Your tooth is restored to optimal shape and function.

